

- FLOOR 09: 5-6 AFFORDABLE UNITS
- FLOOR 08: 5-6 AFFORDABLE UNITS
- FLOOR 07: 5-6 AFFORDABLE UNITS
- FLOOR 06: 5-6 AFFORDABLE UNITS
- FLOOR 05: 5-6 AFFORDABLE UNITS
- FLOOR 04: 5-6 AFFORDABLE UNITS
- FLOOR 03: 5-6 AFFORDABLE UNITS
- FLOOR 02: 3 AFFORDABLE UNITS

NOTE: FINAL LOCATION OF AFFORDABLE HOUSING UNITS WILL BE ADJUSTED TO REFLECT THE FINAL UNIT COUNT AND UNIT MIX, PROVIDED THAT THE LOCATION OF AFFORDABLE UNITS BY FLOOR AND WITHIN EACH FLOOR WILL REMAIN CONSISTENT WITH THE PLANS AND SECTION. THE LOCATION OF THE 12 UNITS ARE SAMPLE LOCATIONS AND SUBJECT TO CHANGE.

SECTION CC

NOTES:

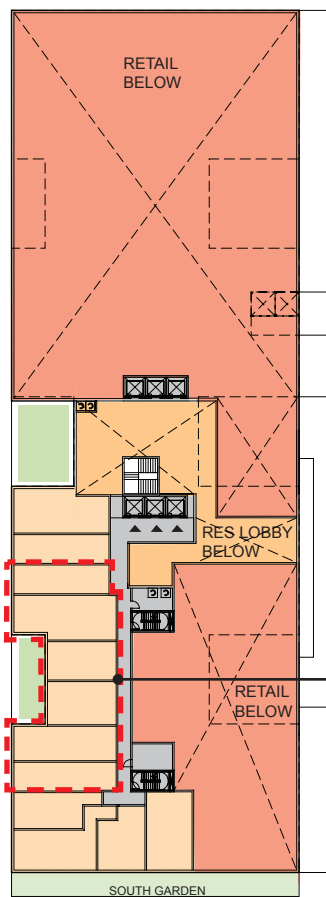
1. REFER TO ROOF PLAN FOR OVERALL BUILDING DIMENSIONS.

2. THE EXTERIOR ELEVATIONS, INCLUDING DOOR AND WINDOW SIZES AND LOCATIONS, WINDOW MULLIONS, THE INTERIOR PARTITION LOCATIONS, THE NUMBER, SIZE, AND LOCATIONS OF RESIDENTIAL UNITS, OUTDOOR SPACE, STAIRS, BALCONIES AND ELEVATORS ARE PRELIMINARY AND SHOWN FOR ILLUSTRATIVE PURPOSES ONLY. FINAL BALCONY LOCATIONS MAY VARY. THE PARKING SPACE LAYOUT IS SHOWN FOR ILLUSTRATIVE PURPOSES ONLY. THE FINAL LAYOUTS MAY VARY.

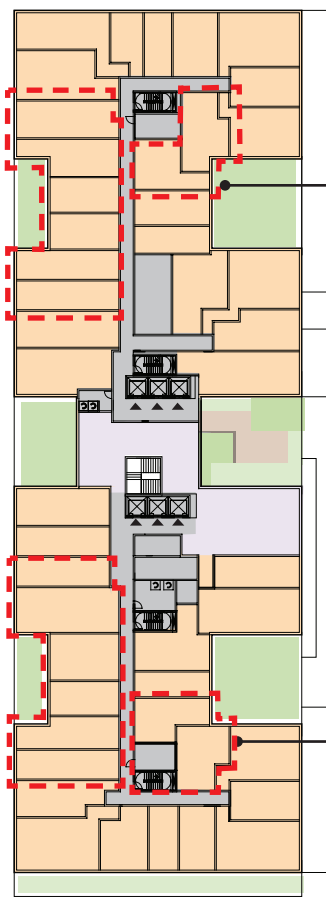
3. ALL SPOT ELEVATIONS ARE RELATIVE TO THE MEASURING POINT +84.08' TAKEN AT THE CENTER OF THE 4TH STREET CURB, ASSUMED FOR THESE DRAWINGS TO BE +0'-0".

LEGEND

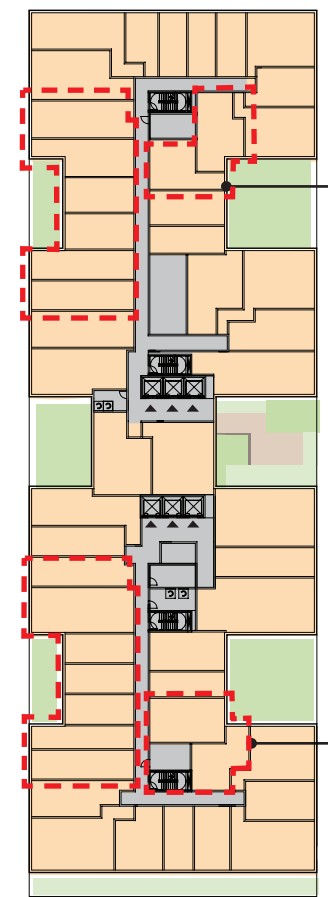
- CORE/ SERVICE
- RETAIL
- RESIDENTIAL
- COMMON AREAS
- PARKING
- GREEN AREA



SECOND FLOOR



THIRD FLOOR



FLOORS 4-9